

IAG Congress XXV

Seattle, Washington

August 17-22, 2022



Wednesday August 17, 2022



Dr. Rebecca Bockow

The Way We Breathe Influences Facial Growth and Development

In this lecture, we will discuss how soft tissue and breathing patterns influence skeletal growth. We will examine similar malocclusions in children and adults, and discuss how the treatment plans differ, depending on the age and skeletal maturation of the patient. For adolescents, our treatment plans will focus on growth modification. For adults, we will explore both surgical and non-surgical options, including adult TAD expansion, as we derive the ideal comprehensive treatment plan.



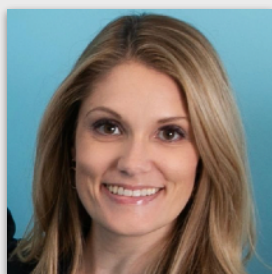
Dr. Ashley Hoders

Anterior Implant Esthetics: Key Indicators for Success

Why has surgical and restorative success with anterior implant esthetics been described as “one of the greatest challenges to the entire dental team?”

This presentation will highlight key factors involved with our ability to create an esthetic outcome for our patients when utilizing implants for anterior tooth replacement from planning to post operative follow up.

Thursday August 18, 2022



Dr. Andrea Fonner

Preparation and Management of Medical Emergencies in the Dental Office

We will discuss important ways to prepare your team for any urgent scenario in your office, including the development of an effective emergency kit. We will also introduce the use of a free cognitive aid called “Ten Minutes Saves A Life!” that can be a lifesaving tool. Finally, we will learn how to recognize and manage common emergencies.



Dr. David Clark



Dr. Lane Ochi



Dr. Markus Troeltzch

The Bioclear Method: Stop Layering and Start Injection Molding!

Most dentists still think of composite as filling material that should be packed into boxy preps and cured in layers. That is simply the wrong way to use composite. In this fast moving and entertaining lecture and hands on course, Dr. Clark will demonstrate the art and science of monolithic injection molded composite dentistry using modern cavity preparations, ultrathin anatomic clear matrices that can completely wrap the tooth, and heated multi-viscosity resins.

Instrumentation Pearls to Reduce Restorative Headaches

The success of our fixed restorations is based on the skill and care that is utilized in their fabrication. One of the essential tools is the articulator. If our only concern is the static relationship of occluding teeth, the design and use of our restorative instruments would be simple. But, the mandible is capable of rotation about three axes, and the final occlusal topography of our restorative efforts must allow for free movement of the opposing teeth without interfering with mandibular movements.

This presentation will focus on how to reduce positive errors in the creation of our restorations for less adjustment and more predictable outcomes.

Protocols for Failing Implants: Reasons, Removal and Rehabilitation

Oral implantology has become a very safe and predictable procedure. Although implant placement and augmentative procedures are routine procedure nowadays, many pitfalls can adversely affect long term satisfaction of the patient and the surgeon. Today the dentist's challenge is to select the appropriate technique and material for the given task while the options and the medical challenges grow constantly. The literature and nowadays social media boast high success rates and satisfied patients but reality sometimes offers a different picture.

This presentation will focus on implant failures of various origin and give an insight into repair and rehabilitation protocols.

Friday, August 19, 2022



Dr. Taiseer Sulaiman

Materials in Digital Dentistry... Are We There Yet?

CAD/CAM in dentistry is constantly growing becoming a user and patient friendly technology and service using intraoral scanners and laboratory/chairside milling units to manufacture dental restorations and appliances from multiple materials including wax, metals, composite resins, and ceramics. Properties of these materials may vary when compared to restorations prepared from conventional and additive manufacturing methods. Understanding the differences in these properties is important for material and fabrication method selection. Additive manufacturing is becoming an alternative to subtractive manufacturing in many applications. However, chemical composition, mechanical and physical properties of these materials are still lacking. 3D printed materials require a considerable amount of research and time to prove its clinical efficacy.



Dr. Gary DeWood

Occlusion and Temporo-Mandibular Disorders

The connection between Occlusion and TMD continues to be one of the most actively debated subjects among doctors with a passion for one or both. Having been invested in both subjects for more than 40 years, at many points in my journey I have been quite clear about the relationship between these. Time on the planet combined with a willingness to hear others' perspective has made it apparent to me that clarity is an ever-changing dynamic for anyone willing to be open to change. Unfortunately, many debates aim to dismiss another position rather than find the connections that make each person's truth not only valid but vital. A moment of renewed clarity can be a wonderful experience, albeit one that is naturally fleeting when we continue to seek truth. Seeing connections in a way that brings another perspective, accepting the nature of clarity to be constantly NEW, does not in any way diminish the importance of what each thing being debated brings to the patients all of us dedicated ourselves to serve.



Dr. Michael Melkers

All About the Why

As a profession, we have a history of pursuing, honing and improving our technical skills in restorative dentistry. Chasing the dragons tail, we have felt that if we only knew more, had more technical skills... owned more articulators (!), patients would say yes to treatment. Unfortunately, that has not been the case for many.

In this program, Michael will introduce and incorporate The Why into the what and the how of our ever day practices and the missing connection in case planning. A thorough understanding of the benefits of patient-centered, doctor-facilitated approach to case planning and acceptance will be presented.

Saturday, August 20, 2022



Dr. Gregg Kinzer

Managing Esthetics and Tooth Wear

No single factor has as much influence on the long-term predictability of restorations as the occlusion. This is especially true with the increased use of all-ceramic restorations, and implants. In order to increase the predictability of the restorative treatment and reduce the potential for ceramic fractures, special attention needs to be given to the occlusal design. This presentation will discuss the three areas of occlusion that need to be evaluated for every patient. The information applies to the entire spectrum of restorative dentistry, whether the restoration is a single tooth or a full mouth reconstruction.

When "Ideal" is Elusive: Overcoming Challenges and Managing Competing Demands in Prosthetic Treatment Planning

Prosthetic treatment planning starts with understanding the basic principles of restorative space, teeth-in-space, and prosthetic contours. Often, major errors in treatment planning and restoration can be avoided by simply following these principles. Many times, however, these dictates are in opposition to each other, represent competing treatment demands and preclude an easy, "ideal" solution. In these instances, difficult decisions and compromises must frequently be made. This presentation reviews these principles and conflicts and provides a framework for decision making.



Dr. Ryan Sloan