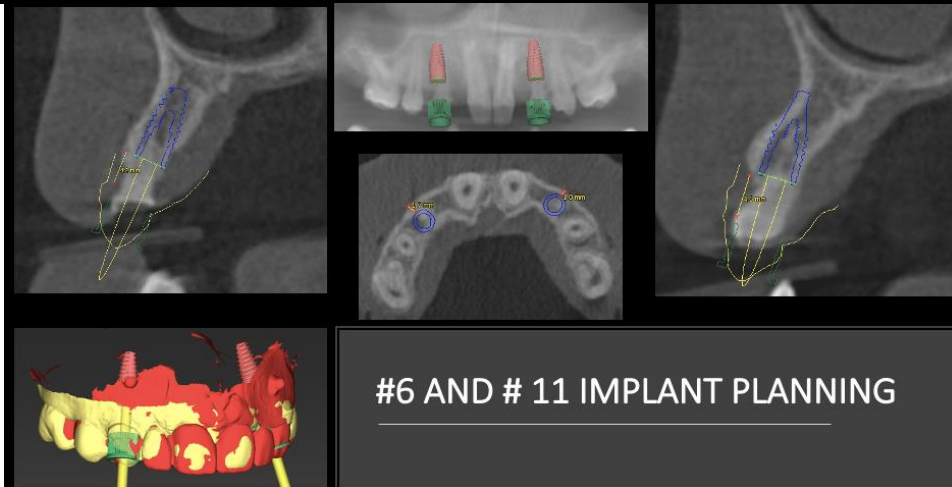
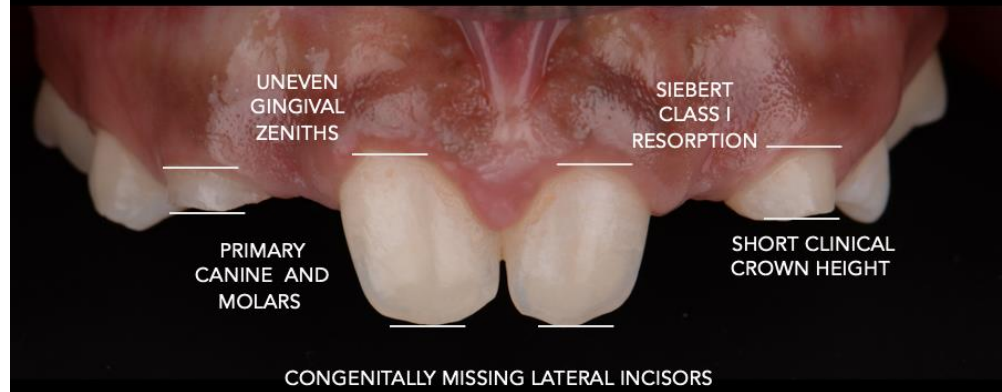


COMPREHENSIVE REHABILITATION OF A YOUNG PATIENT WITH NON SYNDROMIC OLIGODONTIA:
A CASE REPORT

A predictable rehabilitation of a young patient with oligodontia was tested for aesthetics and function with a custom-made laboratory milled PMMA removable prosthesis at desired treatment position. It was possible to anticipate the implant surgical complications at deficient alveolar bone sites with digital planning and CBCT. Conservative teeth preparations with choice of prosthetic material and adhesives contributed to the success and longevity of the treatment.

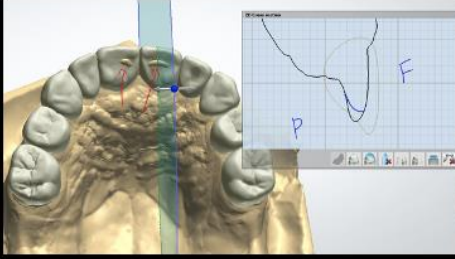
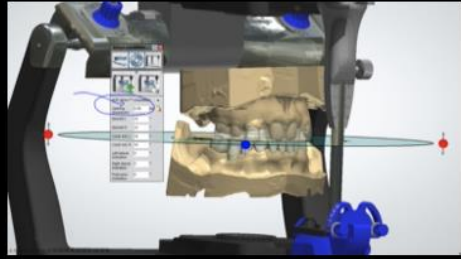
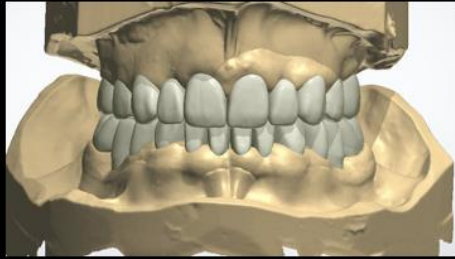


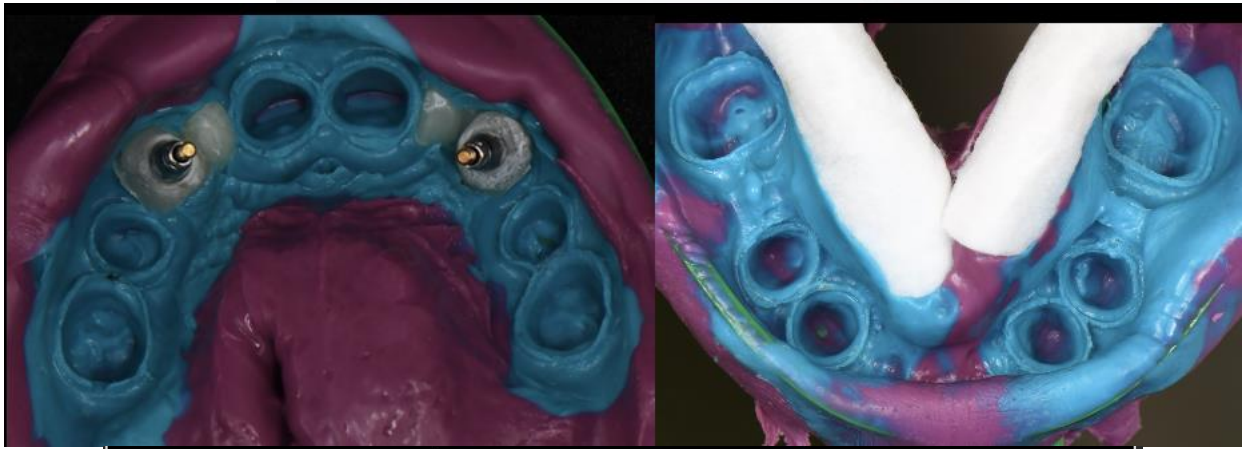
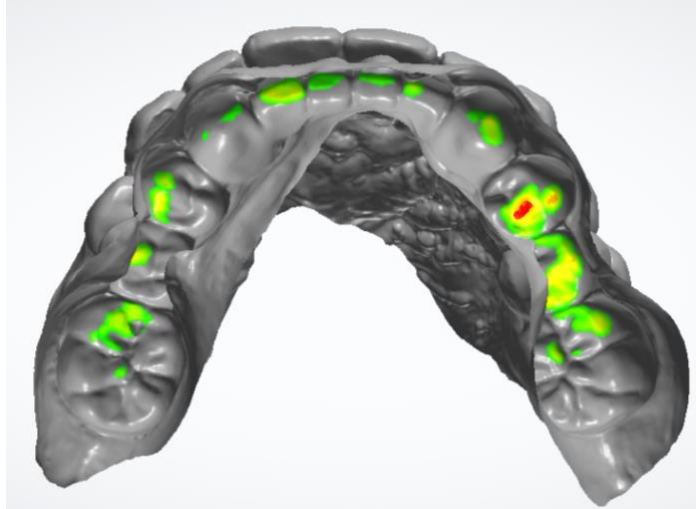
PROBLEM LIST





**DIGITAL WORKUP FOR
FULL ARCH TEMP**





EMERGENCE PROFILE REPLICATION

A grid of six screenshots from a dental software interface. The top-left screenshot shows a maxillary arch with a blue base and purple components. The top-right screenshot shows a similar arch with two white cylindrical objects. The middle-left screenshot shows a maxillary arch with a blue base and purple components. The middle-right screenshot shows a similar arch with two white cylindrical objects. The bottom-left screenshot shows a close-up of a dental implant design. The bottom-right screenshot shows a close-up of a dental implant design.

